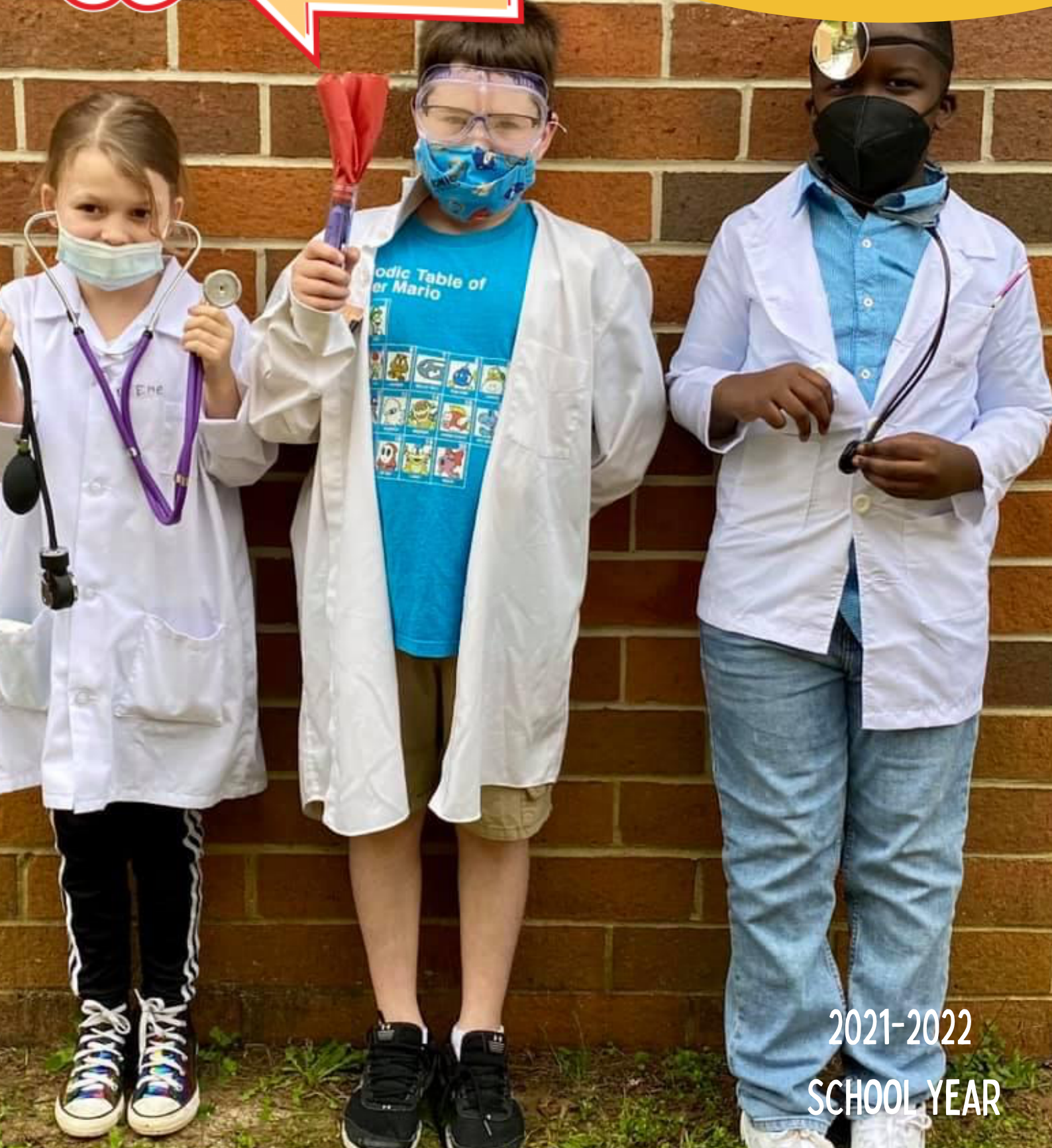


# SAFETY - STRATEGY - SUPPORT

W. T. MOORE ELEMENTARY  
ROADMAP FOR REOPENING -  
PHASE II

**Return**  
TO LEARN



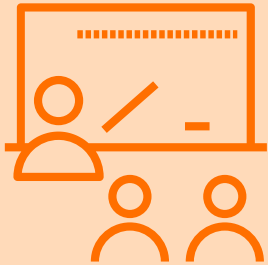
2021-2022  
SCHOOL YEAR

2021-2022

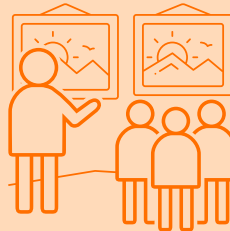
SCHOOL YEAR



## What Will Teaching & Learning Look Like this School Year?



Teaching and Learning in person 5 days a week.



No Field Trips for 1st 9 weeks. We will continue to monitor and update as necessary.



Bus Routes and Schedules will resume as normal. Seating Charts required for contact tracing.



Hot Breakfasts and Lunches 5 days a week. Seating Charts required for contact tracing.



Chromebooks reissued for use in school.



P.E. classes either outdoors or in gym daily, masks optional.



Recess outdoors daily as weather permits, masks optional.



Classroom Cleaning Protocols will resume as usual.



Mask wearing in classrooms and common areas is strongly encouraged for non-vaccinated students, staff, and visitors.



No volunteers or visitors on campus at this time. We will continue to monitor and update as necessary.



QUESTIONS OR CONCERNS?

PLEASE CONTACT US AT (850) 488-2858

WE'RE HERE TO HELP!